

RAMPA®

Good idea. Let's make it!

April 2022

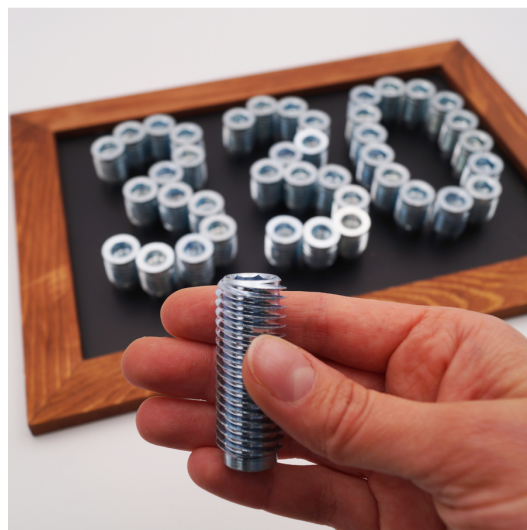
RAMPA NEWS

SKL330 - This superhero has an ETA title instead of a cape

We have a "newcomer" among our 330s that we don't want to deprive you of! The RAMPA insert type SKL330 joins our popular 330 insert series and is in no way inferior to its colleagues. Quite the opposite, in fact: The SKL330 shows it belongs at the top of our "power products" holding an ETA title.

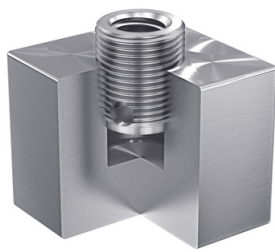
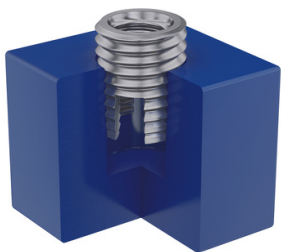
Advantages of SKL330 at a glance:

- Patented 3-start thread contour
- Straight and up to 2.5 times faster assembling
- Automatic alignment by 3 support points
- Maximum load capacities
- Maximum load capacity utilization of the assembling area
- Universally usable in wood materials (softwood, hardwood, and more!) and thermoplastics
- RoHs and CE compliant
- ETA-certified
 - ...load-carrying values can be calculated immediately
 - ...guaranteed mechanical properties
 - ...minimum edge-distances



RAMPA GmbH & Co. KG

Auf der Heide 8 | 21514 Büchen | Tel. +49 (0) 4155 8141-0 | Fax +49 (0) 4155 8141-80 |
mail@rampa.com | www.rampa.com



RAMPA®

Good idea. Let's make it!

April 2022

RAMPA NEWS

This makes the inserts, which is only threaded over part of its length, ideal for low degrees of prefabrication and direct assembly on site. The insert with ETA title is particularly popular in these areas where safety is paramount:

- Stair construction Exterior
- Bridge construction
- Public construction
- Fall protection - Railing fastening
- Balcony fastening
- Canopy fastening
- Awning fastening
- And much more!

Most recently, a RAMPA customer has relied on the use of SKL330 M8*40 for use in playground equipment.

Highest product safety thanks to ETA certification

Our new superhero may not wear a cape, but he does have an ETA (European Technical Approval) title! This allows us to guarantee the mechanical properties and values of the product for wood applications. With the ETA approval we can cover many different applications with these certified parts. You can use the ETA Calculator on our RAMPA website to calculate the pullout values for your individual application. This eliminates the need for individual structural acceptance tests.

Need longer inserts (from 30 mm up to 100 mm in length) for your projects while attaching importance to clean and fast assembling, then the SKL330 is the right choice! You will benefit from cost advantages as you save time during processing and reduce the variety of inserts.

For further product information we have provided load tables and a How to Use for RAMPA type SKL330. Contact us! Our team of experts will be happy to advise you on the numerous possible applications and sizes available.

RAMPA GmbH & Co. KG

Auf der Heide 8 | 21514 Büchen | Tel. +49 (0) 4155 8141-0 | Fax +49 (0) 4155 8141-80 |
mail@rampa.com | www.rampa.com